

PROJECT

Schering-Plough
Kenilworth, New Jersey

CLIENT

Schering-Plough Facilities Management
Kenilworth, New Jersey

PROJECT DESCRIPTION

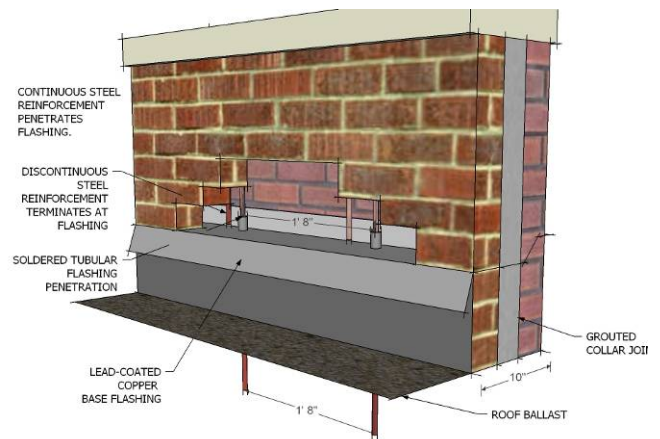
The exterior building envelope at a pharmaceutical research laboratory on the Schering-Plough campus was investigated by Atkinson-Noland & Associates for signs of distress and water penetration issues. A prioritized repair plan including probable causes of distress and conceptual repair approaches was developed to aid the client with their maintenance schedule. Noise and disturbances were minimized due to the sensitive nature of the research being performed in the building.

SERVICES PROVIDED BY ATKINSON-NOLAND

- Condition survey of exterior façade and parapet walls to determine areas of distress
- Generate as built wall sections of parapet walls and analyze for the ability to resist overturning forces due to wind, seismic activity, and window-washer staging
- Conduct water penetration tests to establish masonry construction quality and its ability to resist moisture penetration
- Perform material tests to verify repair material compatibility with original construction materials
- Create prioritized repair plan identifying repair items, repair methods, and level of importance



Building investigated at Schering-Plough campus



Three dimensional schematic of parapet wall construction



Atkinson-Noland & Associates
Consulting Engineers
www.ana-usa.com

2619 Spruce Street
Boulder, CO 80302
303.444.3620

32 Old Slip, 10th Floor
New York, NY 10005
917.647.9530