

## PROJECT

PS 36M  
New York, New York

## CLIENT

NYC School Construction Authority  
Long Island City, New York

## PROJECT DESCRIPTION

PS 36M was constructed in 1967 and has recently experienced accelerating spalling, staining, and cracking associated with embedded steel reinforcing corrosion. There were concerns about the structural integrity of the reinforced concrete and the rate of ongoing deterioration.

## SERVICES PROVIDED BY ATKINSON-NOLAND

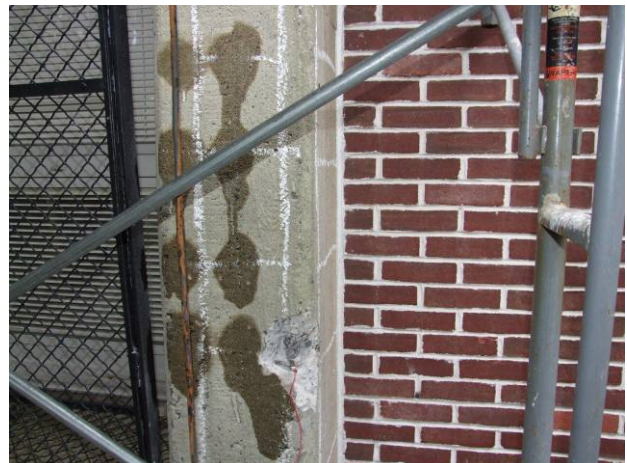
- Location of subsurface reinforcing bars using metal detection
- Half-cell potential and corrosion section loss measurements at representative reinforcing conditions
- Windsor pin testing of in-situ concrete surface hardness
- Concrete core compressive strength testing and calibration to Windsor pin results
- Installation of crack monitors
- Capacitance moisture detection to look for leaks in roof membrane
- Infrared thermography of roof to observe standing water and leak areas



*Overall view of school entrance*



*Close-up view of steel reinforcing with corrosion*



*View of half-cell potential measurement area*



Atkinson-Noland & Associates  
Consulting Engineers  
[www.ana-usa.com](http://www.ana-usa.com)

2619 Spruce Street  
Boulder, CO 80302  
303.444.3620

32 Old Slip, 10th Floor  
New York, NY 10005  
917.647.9530