

## PROJECT

Natural History Building  
University of Illinois  
Champaign, Illinois

## CLIENT

Hanson Professional Services  
Springfield, Illinois

## PROJECT DESCRIPTION

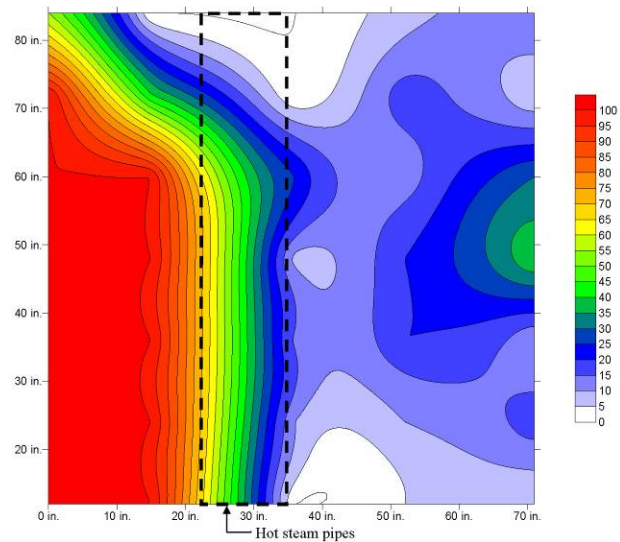
The Natural History Building on the campus of the University of Illinois was constructed in 3 different eras: 1894, 1908, and 1924. A series of diagnostic methods were used by Atkinson-Noland & Associates to evaluate masonry wall and concrete floor slab construction throughout the Natural History Building. Nondestructive evaluation and in situ test methods provide information about as-built conditions, material deterioration, and current conditions.

## SERVICES PROVIDED BY ATKINSON-NOLAND

- Investigation of concrete structural elements and masonry walls to generate as-built section details using microwave radar scanning and borescope examination
- Infrared thermographic scanning used to evaluate the solidity of wall sections including internal fractures and damage, variations in moisture content, and air leakage
- Evaluation of moisture content at selected masonry walls using a moisture meter
- Flatjack testing to determine masonry compressive response, in situ stress, and mortar bed joint shear strength
- Mortar rebound hardness



*Natural History Building, University of Illinois*



*Contour plot of relative moisture content at wall surface.*



Atkinson-Noland & Associates  
Consulting Engineers  
[www.ana-usa.com](http://www.ana-usa.com)

2619 Spruce Street  
Boulder, CO 80302  
303.444.3620

32 Old Slip, 10th Floor  
New York, NY 10005  
917.647.9530