

PROJECT

Hope Evangelical Church
Westcliffe, Colorado

CLIENT

Pahl-Pahl-Pahl pc
Denver, Colorado

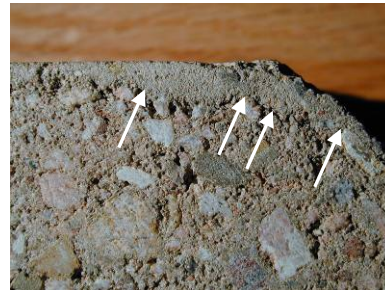


PROJECT DESCRIPTION

The church was built in 1917 of concrete masonry blocks that were reportedly cast on site by members of the church. The main problem with the church exterior is the delamination of the exterior skin of the concrete block.



Typical delamination in site-cast units



Sawn cross section of unit showing face mix

The face mix is a dense, cement rich mixture containing aggregate no larger than $\frac{1}{8}$ inch. The remainder of the mould was filled with a coarse concrete mixture containing aggregates as large as 1 inch. The concrete materials were hand tamped into the mould.

SERVICES PROVIDED BY ATKINSON-NOLAND

- Evaluation of the site cast masonry units.
- Absorption testing of the face and interior concrete mixes.
- Prepared recommendations for repairs and replacement unit face shells.



Atkinson-Noland & Associates
Consulting Engineers
www.ana-usa.com

2619 Spruce Street
Boulder, CO 80302
303.444.3620

32 Old Slip, 10th Floor
New York, NY 10005
917.647.9530