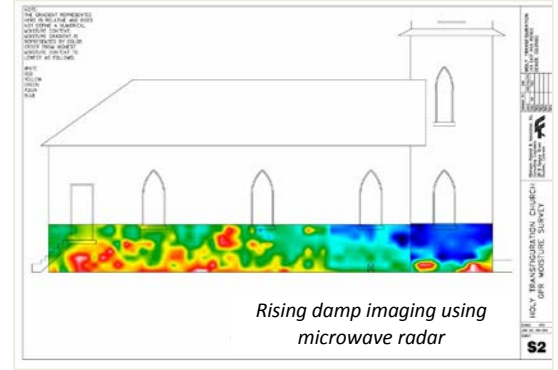


Moisture-Related Diagnostics

Atkinson-Noland offers a full range of investigative techniques for diagnosing moisture penetration problems. Spray tests are often used to identify moisture leakage pathways and the rate of moisture infiltration. We also use infrared thermography, microwave radar, and capacitance-based moisture meters to identify areas of high moisture content and track moisture penetration back to its source.

Imaging Moisture Patterns

- Moisture meters
- Infrared thermography
- Microwave radar



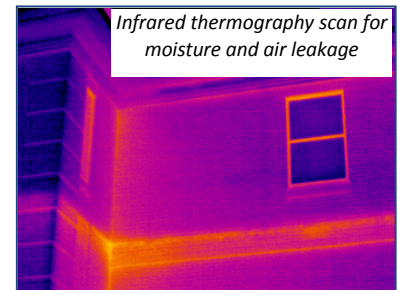
Spray Testing: Windows, Doors, Curtain Walls

- ASTM E1105, *Standard Test Method for Field Determination of Water Penetration of Installed Exterior Windows, Skylights, Doors, and Curtain Walls, by Uniform or Cyclic Static Air Pressure Difference*
- ASTM E 2128, *Standard Guide for Evaluating Water Leakage of Building Walls*
- AAMA 501.2, *Quality Assurance and Diagnostic Water Leakage Field Check of Installed Storefronts, Curtain Walls, and Sloped Glazing Systems*



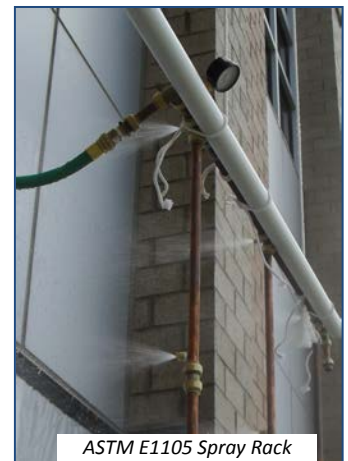
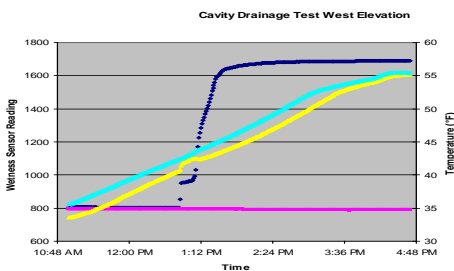
Masonry Facades and Veneer Cavity Drainage

- ASTM C1601, *Standard Test Method for Field Determination of Water Penetration of Masonry Wall Surfaces*
- ASTM C1715, *Standard Test Method for Evaluation of Water Leakage Performance of Masonry Wall Drainage Systems*
- ASTM E514, *Standard Test Method for Water Penetration and Leakage Through Masonry*



Water Absorption

- RILEM Test Method II.4, *Measurement of Water Absorption Under Low Pressure*



Atkinson-Noland & Associates
 Consulting Engineers
www.ana-usa.com

2619 Spruce Street
 Boulder, CO 80302
 303.444.3620

41 E. 11th Street, Ste. 310
 New York, NY 10003
 917.647.9530